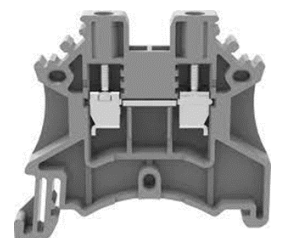
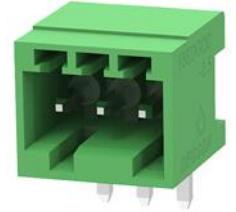


TERMINAL BLOCKS



SWAN ELECTRIC

A MOBICON COMPANY

PCB SCREW TYPE TERMINAL BLOCKS

DG301



- AVAILABLE IN 2 OR 3 OR MORE POLES
- 5.00mm PITCH
- 300V 15A
- WIRE MAX 1.5mm²

DG128



- AVAILABLE IN 2 OR 3 OR MORE POLES
- 5.00 OR 7.50mm PITCH
- 300V 10A
- WIRE MAX 2.54mm²

DG308



- AVAILABLE IN 2 OR 3 OR MORE POLES
- 2.54mm PITCH
- 150V 6A
- WIRE MAX 1.0mm²

DG127



- AVAILABLE IN 2 OR 3 OR MORE POLES
- 5.00 OR 5.08mm PITCH
- 300V 12A
- WIRE MAX 1.5mm²

DG306



- AVAILABLE IN 2 OR 3 OR MORE POLES
- 5.00mm PITCH
- 300V 10A
- WIRE MAX 1.5mm²

DG503



- AVAILABLE IN 2 OR 3 OR MORE POLES
- 5.08mm PITCH
- 300V 20A
- WIRE MAX 2.5mm²

DG500



- AVAILABLE IN 2 OR 3 OR MORE POLES
- 5.00 OR 5.08mm PITCH
- 300V 10A
- WIRE MAX 1.5mm²

DG103 – 45-DEG ENTRY



- AVAILABLE IN 2 OR 3 OR MORE POLES
- 5.00mm PITCH
- 300V 10A
- WIRE MAX 2.5mm²

DG950



- AVAILABLE IN 2 OR 3 OR MORE POLES
- 9.50mm PITCH
- 300V 30A
- WIRE MAX 4.0mm²

DG300



- AVAILABLE IN 2 OR 3 OR MORE POLES
- 5.00 OR 7.50mm PITCH
- 300V 10A
- WIRE MAX 2.0mm²

PCB SCREW TYPE TERMINAL BLOCKS

DG336



- AVAILABLE IN 2 OR 3 OR MORE POLES
- 6.35 OR 7.62 OR 9.52mm PICTH
- 300V 30A
- WIRE MAX 4.0mm²

DG126



- AVAILABLE IN 2 OR 3 OR MORE POLES
- 5.00mm PICTH
- 300V 10A
- WIRE MAX 2.5mm²

DG129



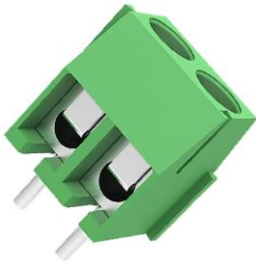
- AVAILABLE IN 2 OR 3 OR MORE POLES
- 5.00mm PICTH
- 300V 20A
- WIRE MAX 2.5mm²

DG135T



- AVAILABLE IN 2 OR 3 OR MORE POLES
- 10.16mm PICTH
- 500V 52A
- WIRE MAX 10mm²

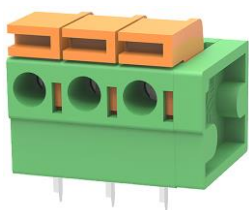
DG350



- AVAILABLE IN 2 OR 3 OR MORE POLES
- 3.96 OR 3.50mm PICTH
- 300V 7A
- WIRE MAX 1.0mm²

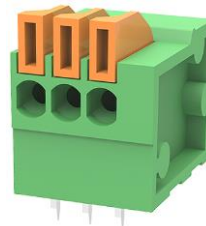


DG142 – PCB SPRING TERMINALS



- AVAILABLE IN 1 TO 18 POLES
- WIRE MAX 0.2 – 1.0mm²
- 130V 6A

DG141 – PCB SPRING TERMINALS



- AVAILABLE IN 1 TO 32 POLES
- WIRE MAX 0.2 – 1.0mm²
- 130V 6A

DG332J / DG333J PCB PIN HEADER



- PITCH : 3.5 or 5mm
- 300V 10A
- MATES WITH DG333K
- AVAILABLE UP TO 24 PIN

DG332K / DG333K PLUG IN SCREW TERMINAL



- PITCH : 3.5 or 5mm
- 300V 10A
- MATES WITH DG333K
- AVAILABLE UP TO 13 POLES

PCB PINS AND CONNECTORS

DG220 TEST PIN



- TOTAL LENGTH : 13.5mm
- PCB SIDE : 1.10 x 4.50mm
- CONNECT SIDE : 1.00 x 8.50

K5 SPADE TERMINAL



- FOR 4.8mm
- QUICK CONNECT
- M3 BOARD SCREW
- 0.6mm THICK
- TIN PLATED

K9 SPADE TERMINAL



- FOR 4.8mm
- QUICK CONNECT
- 0.8mm THICK
- TIN PLATED

K12 SPADE TERMINAL



- FOR 6.35mm
- QUICK CONNECT
- 0.8mm THICK
- TIN PLATED

K27 SPADE TERMINAL



- FOR 6.35mm
- QUICK CONNECT
- 0.8mm THICK
- TIN PLATED

K36 SCREW PCB TERMINAL



- TIN PLATED
- M4 SCREW
- 100A

K31 SCREW PCB TERMINAL



- TIN PLATED
- M4 SCREW
- 40A

K34 SCREW PCB TERMINAL



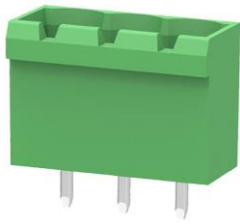
- TIN PLATED
- M5 SCREW
- 65A

WE ALSO STOCK TERMINAL CRIMPING TOOLS AND TERMINAL INSERTION AND EXTRACTION TOOLS



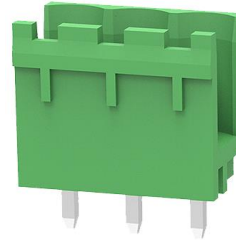
PCB PLUG PCB IN TERMINALS

2EDGVC PLUG IN HEADER



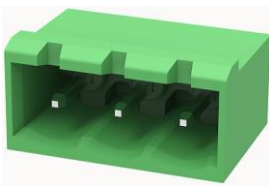
- FROM 2 TO 24 POLES
- PITCH 5.0, 5.08, 7.5, OR 7.62mm
- 320V 20A
- CLOSED SIDES

2EDGV PLUG IN HEADER



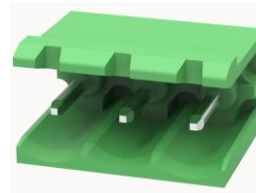
- FROM 2 TO 24 POLES
- PITCH 5.0, 5.08, 7.5, OR 7.62mm
- 320V 20A
- OPEN SIDES

2EDGRC R/A PLUG IN HEADER



- FROM 2 TO 24 POLES
- PITCH 5.0, 5.08, 7.5, OR 7.62mm
- 320V 20A
- CLOSED SIDES

2EDGR PLUG IN HEADER



- FROM 2 TO 24 POLES
- PITCH 5.0, 5.08, 7.5 OR 7.62mm
- 320V 20A
- OPEN SIDES

2EDGK PLUG IN SOCKET



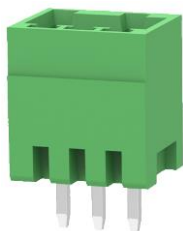
- FROM 2 TO 24 POLES
- PITCH 5.0, 5.08, 7.5, OR 7.62mm
- 320V 20A

15EDGK – PLUG IN SOCKET



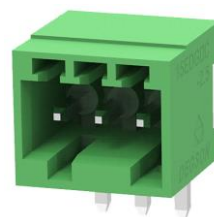
- FROM 2 TO 24 POLES
- PITCH 2.5, 3.5, 3.81, 5.0mm
- 250V 5A
- WIRES UP TO 1.5mm²

15EDGVC - PLUG IN HEADER



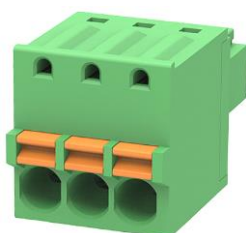
- FROM 2 TO 24 POLES
- PITCH 2.5, 3.5, 3.81, 5.0mm
- 250V 5A
- CLOSED SIDES

15EDGRC – R/A PLUG IN HEADER



- FROM 2 TO 24 POLES
- PITCH 2.5, 3.5, 3.81, 5.0mm
- 250V 5A
- CLOSED SIDES

15EDGKD – SPRING LOADED PLUG IN TERMINAL



- INTERFACES WITH : 15EDG...
- AVAILABLE IN PITCH : 2.5, 3.5, 3.81,
- FROM 2 TO 20 POLES



BARRIER AND STRIP TERMINALS

DG25 / DG55C PCB MOUNT TERMINAL BLOCK



- FROM 2 TO 24 POLES
- PITCH 7.62 OR 10mm
- 600V 15A OR 30A
- WITH OR WITHOUT MOUNTING EARS

DG25H / DG55H SOLDER TAG TERMINAL BLOCK



- FROM 2 TO 24 POLES
- PITCH 7.62 OR 10mm
- 600V 15A OR 30A
- WITH OR WITHOUT MOUNTING EARS

DG25R / DG55R R/A PCB MOUNT TERMINAL BLOCK



- FROM 2 TO 24 POLES
- PITCH 7.62 OR 10mm
- 600V 15A OR 30A
- WITH OR WITHOUT MOUNTING EARS

DG25S / DG55S PANEL MOUNT TERMINAL BLOCK



- FROM 2 TO 24 POLES
- PITCH 7.62 OR 10mm
- 600V 15A OR 30A
- WITH OR WITHOUT MOUNTING EARS

DG49 / DG69 – TRANSFER BARRIER TERMINAL



- FROM 2 TO 24 POLES
- 750V 20A OR 32A
- PICTH : 9.5 OR 11mm

BUSBAR TERMINAL AVAILABLE



DG2002 LIGHTING TERMINALS (COMING SOON)



RANGE OF PRE-INSULATED TERMINALS AVAILABLE

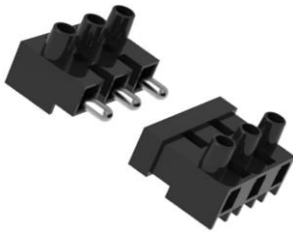


DEGSON TERMINALS ARE AVAILABLE IN A MULTITUDE OF COLOURS (T&C APPLY)



BARRIER AND STRIP TERMINALS

QUICK DISCONNECT FEEDTHROUGH CONNECTOR



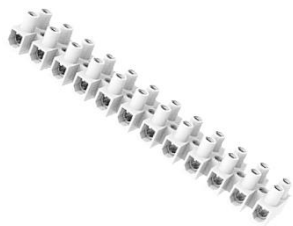
- FROM 1 TO 5 POLES
- 450V 24A
- 0.5 – 2.5mm²
- PITCH : 10mm

DG801 – FUSED FEEDTHROUGH STRIP CONNECTOR



- FROM 1 TO 5 POLES
- 250V 6.3A
- 0.5 – 2.5mm² WIRE
- 10mm PITCH

FEEDTHROUGH STRIP CONNECTOR



	P/N	CURRENT	VOLTAGE	WIRE SIZE	PITCH
	DG8	24A	450V	0.5 – 2.5mm ²	8.2mm
	DG10	40A	450V	1 – 6mm ²	10mm
	DG12	40A	750V	0.75 – 6mm ²	11.5mm
	DG15	57A	750V	1.0 – 10mm ²	15mm

DG222 – SPLICING CONNECTORS



- 1 POLE
- 450V 24A
- 0.2 – 2.5mm² WIRE
- 8mm PITCH

DG223 – SPLICING CONNECTORS



- FROM 1 TO 5 POLES
- 250V 6.3A
- 0.5 – 2.5mm² WIRE
- More on page D17

DG221 – SPLICING CONNECTORS



- FROM 1 TO 5 POLES
- 450V 32A
- 0.5 – 4mm² WIRE
- 5.6mm PITCH

DG228 – SPLICING CONNECTORS



- FROM 1 TO 5 POLES
- 450V 24A
- 0.5 – 4mm² WIRE
- 3.5mm PITCH

PLUG IN STRIPS AVAILABLE FROM STOCK

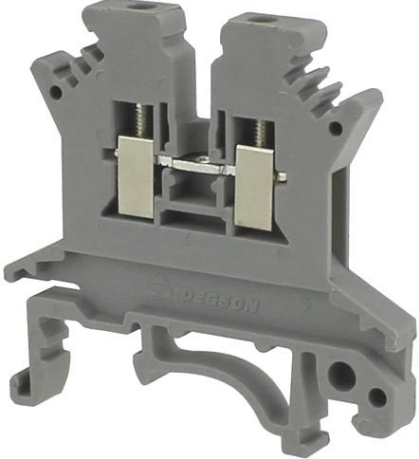


EARTHING AND NEUTRAL BARS AVAILABLE

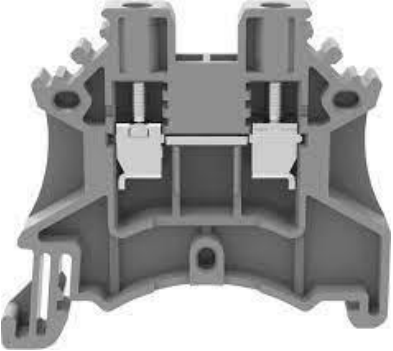


DIN RAIL TERMINALS

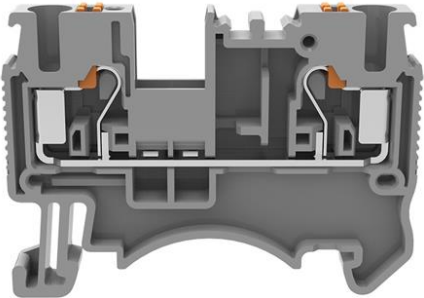
PC SERIES DIN RAIL SCREW TERMINALS

	P/N	CURRENT (A)	VOLTAGE (V)	WIRE SIZE (mm ²)	PITCH (mm)
	PC1.5	17.5	500	0.2 – 1.5	4.2
	PC2.5	24	800	0.2 – 2.5	5.2
	PC4	32	800	0.2 – 4	6.2
	PC6	41	800	0.2 – 6	8.2
	PC10	57	800	0.2 – 10	10.2
	PC16	76A	800	0.2 – 16	12.2
	PC35	125A	1 000	0.2 – 35	15.2
	PC50	125A	1 000	16 - 50	20.0
	PC95	232A	1 000	25 - 95	25.0

DC SERIES DIN RAIL SCREW TERMINALS

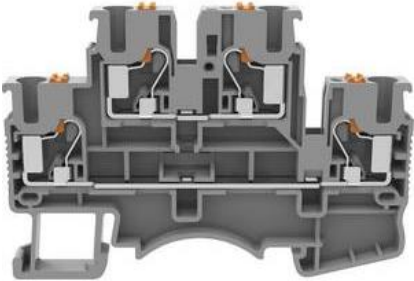
	P/N	CURRENT (A)	VOLTAGE (V)	WIRE SIZE (mm ²)	PITCH (mm)
	DC2.5	24	800	0.2 – 2.5	5.1
	DC4	32	800	0.2 – 4	6.1
	DC6	41	1 000	0.5 – 6	8.0
	DC10	57	1 000	0.5 – 10	10.0
	DC16	76A	1 000	1.5 – 25	12.0
	DC35	125A	1 000	2.5 – 35	16.0

DS SERIES DIN RAIL PUSH-IN / SPRING TERMINALS


	P/N	CURRENT (A)	VOLTAGE (V)	WIRE SIZE (mm ²)	PITCH (mm)
	DS1.5	17.5	500	0.14 – 1.5	3.5
	DS2.5	24	800	0.2 – 4	5.2
	DS4	32	800	0.2 – 6	6.2
	DS6	41	1 000	0.5 – 10	8.2
	DS10	57	1 000	0.5 – 16	10.2
	DS16	76A	1 000	0.5 - 25	12.2

DIN RAIL TERMINALS

DSKK SERIES DIN RAIL PUSH-IN / SPRING TERMINALS – DUAL CONTACT

	P/N	CURRENT (A)	VOLTAGE (V)	WIRE SIZE (mm ²)	PITCH (mm)
	DSKK2.5	22A	500V	0.2 – 4	5.2
DSKK4	32A	500V	0.2 – 6	6.2	

END COVERS

	P/N	FOR TERMINALS
	D-DC2.5	DC2.5, DC4,
	DC-DC6	PC6, DC6, DC10
	D-DC16	DC16
	DC-PC2.5	PC2.5, PC10
	DC-PC16	PC16
	D-DS4	DS4
	D-MKK1	MKK1

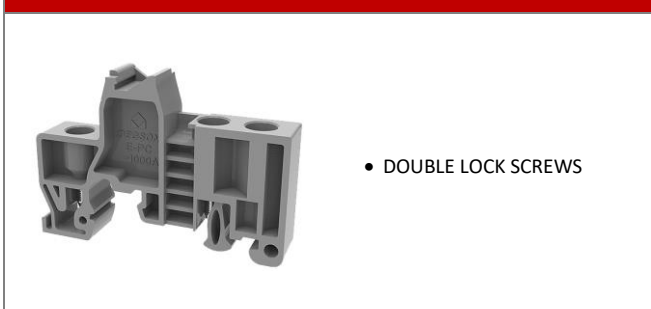
E-WS – END STOPS



E-PC – END STOPS



E-PC...1000 – END STOPS




E-PC DIN 15 – END STOPS

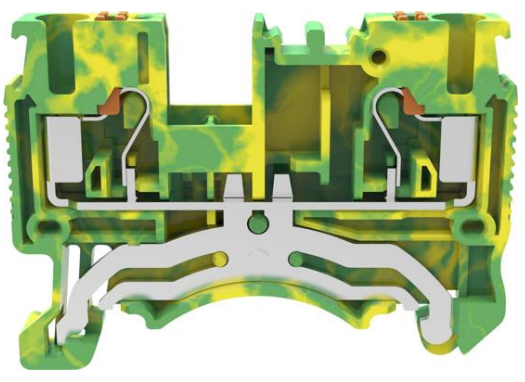


DIN RAIL TERMINALS

EARTH TERMINALS

	P/N	FOR TERMINALS
	DC2.5-PE	DC2.5
	DC4-PE	DC4
	DC6-PE	DC6
	DC10-PE	DC10
	DC16-PE	DC16
	PC1.5-PE	PC1.5
	PC2.5-PE	PC2.5
	PC4-PE	PC4
	PC6-PE	PC6
	PC10-PE	PC10
	PC16-PE	PC16
	PC35-PE	PC35
	PC50-PE	PC50

EARTH TERMINALS

	P/N	FOR TERMINALS
	DS1.5-PE	DS1.5
	DS2.5-PE	DS2.5
	DS4-PE	DS4
	DS6-PE	DS6
	DS10-PE	DS10
	DS16-PE	DS16

TORQUE SCREW DRIVERS AVAILABLE




ELECTRIC PRODUCTION SCREW DRIVERS AVAILABLE




TRANSFORMER TERMINALS

TS SERIES

	P/N	CURRENT (A)	VOLTAGE (V)	POLES	WIRE SIZE (mm ²)
	TS2.5	24	800	2 OR 3	0.5 – 2.5
	TS4	32	250	1	0.75 - 4
	TS10	57	750	1	4 - 10

TSB SERIES


	P/N	CURRENT (A)	VOLTAGE (V)	POLES	WIRE SIZE (mm ²)
	TSB2.5	24	250	2 OR 3	0.5 – 2.5
	TSB4	32	450	1	0.5 - 4

TSF2.5 – FUSE HOLDER TERMINAL



- FOR WIRE : 0.5 – 2.5mm²
- FOR 5x20 FUSE 10A MAX
- 250V

TSZB – MARKING STRIPS



- AVAILABLE IN :
BLANK OR PRE-PRINTED

METAL BAR FOR TS TERMINALS



- AVAILABLE IN ANY LENGTH
- 10 x 2mm

WE STOCK A FULL RANGE OF MULTIMETERS



VAST RANGE OF TEST PROBES IN STOCK





ACCESSORIES FOR DIN RAIL TERMINALS

NS35 – DIN RAIL



- 35mm
- LENGTH 1m
- TREATED STEEL

DRP – DIN RAIL CLIPS FOR EQUIPMENT



- CLIPS ON 35mm RAIL
- AVAILABLE IN:
45 or 80mm LONG

FBR – BRIDGING BARS



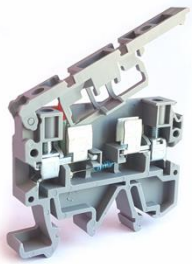
- FOR TERMINALS WITH PITCHES :
4mm
5mm
8mm

ZB – TERMINAL MARKERS



- FOR TERMINALS WITH PITCHES :
4mm
5mm
8mm
- AVAILABLE WITH :
LETTERS, NUMBERS
OR BLANK

MKK1 – FUSE TERMINAL WITH LED



- LED FUSED INDICATOR
- PITCH : 82mm
- TAKES 5x20 FUSE
- 6.3A MAX AND 500V MAX

DGR SERIES END STOP



- SCREW LOCKS

DFA / DFB / EB – BRIDGING BARS



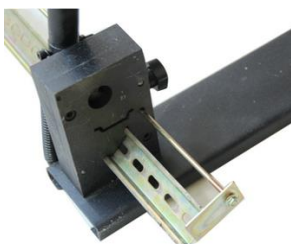
- FOR TERMINALS WITH PITCHES :
4mm
5mm
6mm
8mm
10mm

LABEL / LEGEND FOR DIN RAIL END STOPS



- FITS : E-PC, E-PC...1000

DIN RAIL GUILLOTINE / CUTTER



- MANUALLY OPERATED

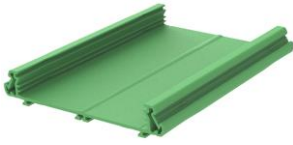
DBE – LABEL / LEGEND FOR DIN RAIL



- CLIPS DIRECTLY ON
DIN RAIL
- 44x16 LABEL FACE

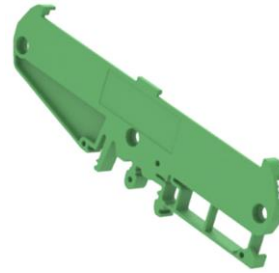
DIN RAIL ENCLOSURES / TRAYS

DM BASE



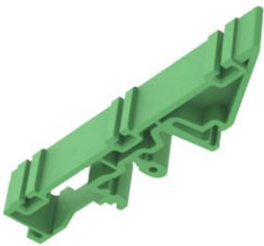
- AVAILABLE IN WIDTH : 72, 100, 108mm
- SOLD IN METER LENGTHS OR CUT TO LENGTH

SIDE COVERS FOR DM BASE



- ORDER LHS AND RHS SEPARATELY
- AVAILABLE FOR WIDTH : 72, 100, 108mm

DIN RAIL CLIP FOR DM BASES



- AVAILABLE FOR WIDTH : 72, 100, 108mm

SCREW FOR DM SIDE COVERS



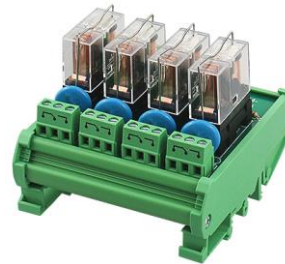
- USED TO SECURE SIDE COVERS

DM50 DIN RAIL MOUNT ENCLOSURE



- 50mm WIDE
- AVAILABLE IN DIFFERENT COLOURS
- SOLD IN METER LENGTHS OR CUT TO LENGTH

DM72 RELAY MODULES



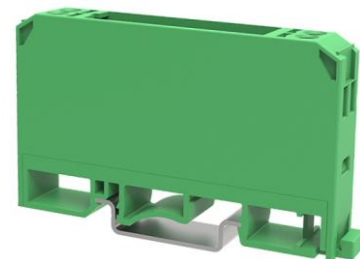
- AVAILABLE FROM 4 TO 20 RELAYS
- AVAILABLE IN SPDT OR DPDT
- AVAILABLE AS SOLID STATE RELAY

DM72 INTERFACE / BREAKOUT MODULES



- AVAILABLE FROM 9 TO 50 PIN D-SUB OR IDC CONNECTORS

OTHER INSTRUMENT ENCLOSURES COMING SOON...



AUTOMOTIVE CONNECTORS, COMING SOON...



DEGSON INDUSTRIAL CONNECTORS, COMING SOON.



STRIP TERMINAL BLOCKS

TB-H SERIES



- AVAILABLE IN :
6A, 10A, 15A, 16A,
20A, 30A, 60A
- 12-WAY
- 300V

DG8 SERIES



- AVAILABLE IN :
3A, 6A, 10A, 15A, 16A,
20A, 30A, 40A, 60A
- 12-WAY
- 300V

PLUG-IN SERIES



- AVAILABLE IN :
3A, 6A, 10A
- 12-WAY
- 300V

DG280 SERIES



- AVAILABLE IN :
2P, 3P AND 4-POLE
- 400V
- 16A
- 0.5 – 2.5mm²

FUSED DG801



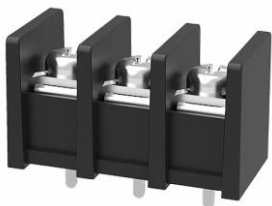
- AVAILABLE IN :
2P, 3P 4P AND 5-POLE
- 300V 6A
- FOR 5x20mm FUSE
- 0.5 – 2.5mm²

BARRIER TYPE – DG55C-A SERIES



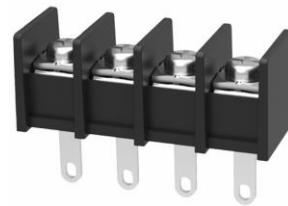
- PCB SOLDER PINS P=10mm
- WITH MOUNTING EARS
- AVAILABLE IN :
2P TO 12P
- 20A 300V

BARRIER TYPE – DG55C-B & DG65S-B SERIES



- PCB SOLDER PINS
P=10mm OR 11mm
- NO MOUNTING EARS
- AVAILABLE IN :
2P TO 24P
- 20A 300V

BARRIER TYPE - DG65H-B SERIES



- WIRE SOLDER TAGS
P=11mm
- NO MOUNTING EARS
- AVAILABLE IN :
4P TO 5P
- 30A 300V

BARRIER TYPE - DG65H-A SERIES



- WIRE SOLDER TAGS
P=11mm
- WITH MOUNTING EARS
- AVAILABLE IN :
2P TO 14P
- 30A 300V

CONNECTORS FOR ALL...



BUSBARS

BARE EARTHING BAR - RB SERIES



- BARE BRASS
- 7-WAY

INSULATED EARTHING BAR – KS006



- INSULATED BRASS
- AVAILABLE IN :
63A, 100A
- AVAILABLE IN :
6P, 8P, 10P, 12P

INSULATED EARTHING BAR – KS008



- INSULATED / EXPOSED BRASS
- AVAILABLE IN :
8P

INSULATED NEUTRAL BAR – KS008



- INSULATED / EXPOSED BRASS
- AVAILABLE IN :
8P

INSULATED EARTHING BAR – KS008



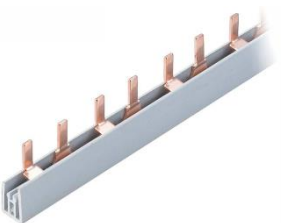
- INSULATED / EXPOSED BRASS
- AVAILABLE IN :
6P, 8P

INSULATED NEUTRAL BAR – KS006



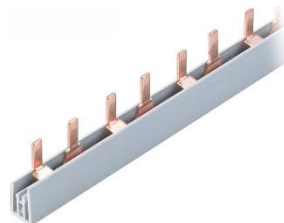
- INSULATED BRASS
- AVAILABLE IN :
63A, 100A
- AVAILABLE IN :
6P, 8P, 10P, 12P

INSULATED BUSBAR 1-PH – BBI SERIES



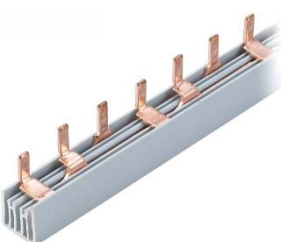
- 18mm PITCH
- AVAILABLE IN : 63A

INSULATED BUSBAR 2-PH – BBI SERIES



- 18mm PITCH
- AVAILABLE IN : 63A

INSULATED BUSBAR 3-PH – BBI SERIES



- 18mm PITCH
- AVAILABLE IN : 63A, 100A
- 3, 6 AND 10KA

BUSBAR SUPPORT - 302500



- UNIVERSAL DESIGN
- PVC

PRE-INSULATED CRIMP TERMINALS / LUGS

PUSH-ON FEMALE TERMINAL – FDD SERIES



- AVAILABLE IN :
RED, BLUE AND YELLOW
- AVAILABLE FOR :
4.75 & 6.35mm TERMINALS

STACKABLE PUSH-ON TERMINAL – PBDDN SERIES



- AVAILABLE IN :
RED, BLUE AND YELLOW
- AVAILABLE FOR :
4.75 & 6.35mm TERMINALS

SPADE / FORK TERMINAL - SV SERIES



- AVAILABLE IN :
RED, BLUE AND YELLOW
- AVAILABLE FOR SCREWS :
3, 4, 5, 6 AND 8mm

PUSH-ON MALE TERMINAL – MDD SERIES



- AVAILABLE IN :
RED, BLUE AND YELLOW
- AVAILABLE FOR :
4.75 & 6.35mm TERMINALS

RING TERMINAL - RV SERIES



- AVAILABLE IN :
RED, BLUE AND YELLOW
- AVAILABLE FOR SCREWS :
3, 4, 5, 6, 8, 10 AND 12mm

BULLET MALE TERMINAL – MPD SERIES



- AVAILABLE IN :
RED, BLUE AND YELLOW
- 10 TO 24AMPS

PUSH-ON FEMALE TERMINAL – FDFD SERIES



- AVAILABLE IN :
RED, BLUE AND YELLOW
- AVAILABLE FOR :
4.75 & 6.35mm TERMINALS

BULLET FEMALE TERMINAL – FRD SERIES



- AVAILABLE IN :
RED, BLUE AND YELLOW
- 10 TO 24AMPS

COPPER LUGS



WE ALSO KEEP A RANGE OF
COPPER LUGS

WE KEEP A VAST RANGE OF CRIMPING TOOLS



POWER CONNECTOR BLOCKS

POWER BARRIER TERMINAL – TB-TC




- AVAILABLE IN : 15A, 25A, 35A, 45A, 60A, 100A, 150A, 200A, 300A, 400A
- AVAILABLE IN : 3P, 4P, 6P

POWER DISTRIBUTION BLOCKS - PDB




- AVAILABLE IN : 80A, 125A, 160A, 175A, 250A, 400A

POWER DISTRIBUTION BLOCKS - MDB



- AVAILABLE IN : 2-BARS, 4-BARS...
- AVAILABLE IN : 160A 200A, 250A, 400A

POWER DISTRIBUTION BLOCKS - MDB




- AVAILABLE IN : 2-BARS, 4-BARS...
- AVAILABLE IN : 160A 200A, 250A, 400A



WE ALSO STOCK A VAST RANGE OF INDUSTRIAL / CEE POWER PLUGS AND SOCKETS

SPLICING / QUICK CONNECT TERMINALS

PUSH-IN QUICK CONNECT



- AVAILABLE IN : 2P, 4P, 6P AND 8P

LEVER LOCK QUICK SHUNT CONNECTORS




- PCT SERIES
- AVAILABLE IN : 2P, 3P, 4P, 5P, 8P

LEVER LOCK QUICK SHUNT THOUGHT CONNECTORS



- PCT2 SERIES
- AVAILABLE IN : 2P, 3P, 4P 5P, 8P

LEVER LOCK QUICK SHUNT CONNECTORS



- DGBSC SERIES
- AVAILABLE IN : 1P, 2P, 3P, 5P

CIRCULAR CONNECTORS

INLINE IP68 MALE CONNECTORS – SP13



- FROM 2 TO 9 PINS
- RATED UP TO 13A AND UP TO 250VAC
- COMPRESSION CABLE ENTRY
- 18x50mm

INLINE IP68 FEMALE CONNECTORS – SP13



- FROM 2 TO 9 PINS
- RATED UP TO 13A AND UP TO 250VAC
- COMPRESSION CABLE ENTRY
- 18x50mm

PANEL MOUNT IP68 MALE CONNECTORS – SP13



- FROM 2 TO 9 PINS
- RATED UP TO 13A AND UP TO 25VAC
- COMPRESSION CABLE ENTRY
- 19x19mm

PANEL MOUNT IP68 FEMALE CONNECTORS – SP13



- FROM 2 TO 9 PINS
- RATED UP TO 13A AND UP TO 25VAC
- COMPRESSION CABLE ENTRY
- 19x19mm

RJ45 FEMALE PANEL MOUNT DATA CONNECTOR IP67



- RJ45
- WITH DUST / WATER CAP
- 38x48mm
- R/A ALSO AVAILABLE

RJ45 MALE INLINE DATA CONNECTOR IP67



- IN-LINE
- AVAILABLE FOR : 5 TO 7mm CABLE
- 32x62mm

IN-LINE MALE CONNECTOR - WAC SERIES



- 3-PINS
- 20A 250VAC RATED
- IP65 RATED
- 34x76mm

IN-LINE FEMALE CONNECTOR - WAC SERIES



- 3-PINS
- 20A 250VAC RATED
- IP65 RATED
- 31x37mm



PANEL ENTRY JUNCTION BOX – TYP6004



- 5-PIN
- 30A 250V
- 97x114x42mm
- CABLE DIA. : 7-12mm

INDEX	
CONTENTS	PAGE
ACCESSORIES FOR TERMINALS	T12
BARRIER TERMINAL BLOCKS	T6, T14
BREAKOUT BOARDS	T13
BUSBARS	T15
CIRCULAR CONNECTORS	T18
CRIMP TERMINALS AND TOOLS	T16
CRIMPING TOOLS	T16
DIN RAIL ENCLOSURES	T13
DIN RAIL TERMINALS	T8, T9, T10
EARTH BUS BARS	T7, T15
ENCLOSURES, DIN RAIL MOUNT	T13
FUSED TERMINAL BLOCKS	T7
HEADERS, PIN, SIL	T5
INTERFACE BOARDS	T13
LUGS	T16
METAL PCB CONNECTORS	T4
NEUTRAL BUS BARS	T7, T15
PCB PUSH IN TERMINALS	T3
PCB SCREW TERMINAL BLOCKS	T2
PCB SPRING TERMINALS	T3
PCB TABS	T4
PCS SPADE TERMINALS	T4
PINS FOR PCB	T4, T5
PLUG IN CONNECTORS	T5
PLUG IN STRIP TERMINALS	T7
POWER CONNECTOR BLOCKS	T17
PRE-INSULATED TERMINALS	T16
QUICK-CONNECTORS	T4
RELAY INTERFACE BOARDS	T13
SCREW TERMINAL BLOCKS FOR PCB	T2
SIL / SIP HEADERS	T5
SPADE CONNECTORS	T4
SPLICING TERMINALS	T7, T17
STRIP TERMINALS	T7, T14
TEST PINS	T4
TRANSFORMER TERMINALS	T11

SWAN ELECTRIC...

Ask for these products by name, at a wholesaler near you.



www.swan-electric.co.za

CITY	TEL	EMAIL
CAPE TOWN	+27 21 555 0644	sales@swan-electric.co.za
DURBAN	+27 31 206 2783 / 4	
EAST LONDON	+27 43 743 2310	
GEORGE	+27 44 884 0640	
JOHANNESBURG	+27 11 493 9307	
MIDRAND	+27 11 314 0202	
PORT ELIZABETH	+27 41 364 1893	
PRETORIA (DESK)	+27 12 330 0671 / 4	

SWAN ELECTRIC IS A MOBICON COMPANY

