

THERMAL RELAY

THR-LR9



APPLICATION / DESCRIPTION

LR9 series electronic thermal relays are suitable for AC 50/60Hz, rated voltage to 660V, current to 630A circuit, as a three-phase AC motor overload and phase break protection. This series of thermal relays has the advantages of wide current regulation range, high sensitivity, low energy consumption and reliable operation, and can replace the traditional bi-metal plate thermal relays. This product complies with IEC60947-4 standard.

Installation conditions:

1. Altitude: no more than 2000m,
2. Ambient temperature: $-5^{\circ}\text{C}\sim+40^{\circ}\text{C}$, the average temperature within 24 hours does not exceed $\pm 35^{\circ}\text{C}$.
3. Atmospheric conditions: the relative humidity of the atmosphere does not exceed 50% at $+40^{\circ}\text{C}$, and the relative humidity can be higher at lower temperatures. The monthly mean minimum temperature of the wettest month does not exceed $+25^{\circ}\text{C}$, and the monthly mean maximum relative humidity of the month does not exceed 90%, taking into account condensation that occurs on the product due to temperature changes.
4. The inclination of the mounting surface and the vertical plane shall not exceed $\pm 5^{\circ}$.
5. In the medium without explosion danger, and there is no gas and conductive dust in the medium sufficient to corrode metal and destroy insulation.
6. In places with rain and snow protection equipment and not full of steam.
7. Where there is no significant shaking, shock or vibration.
8. Pollution level: III.

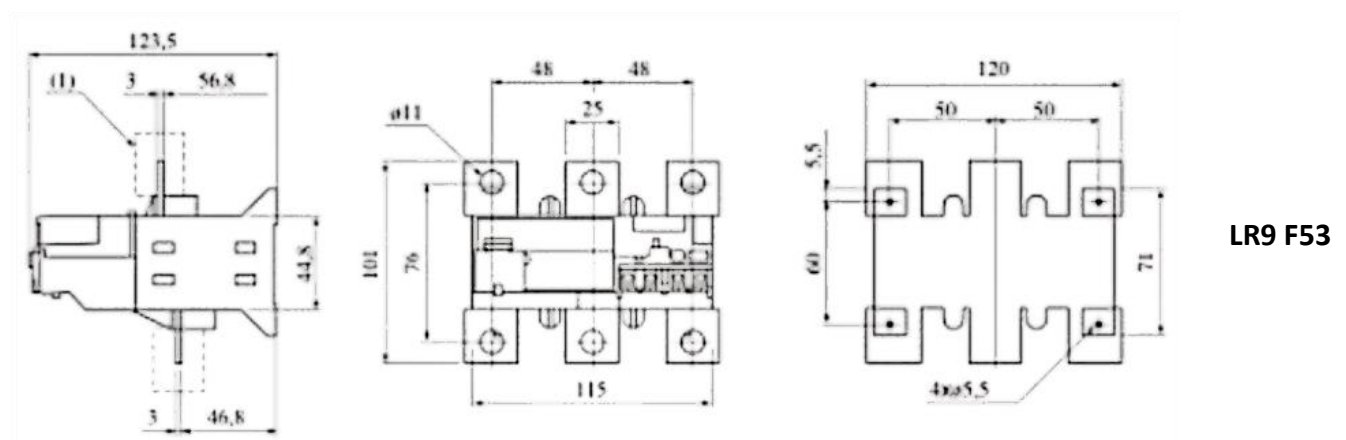
PART NUMBER EXAMPLE

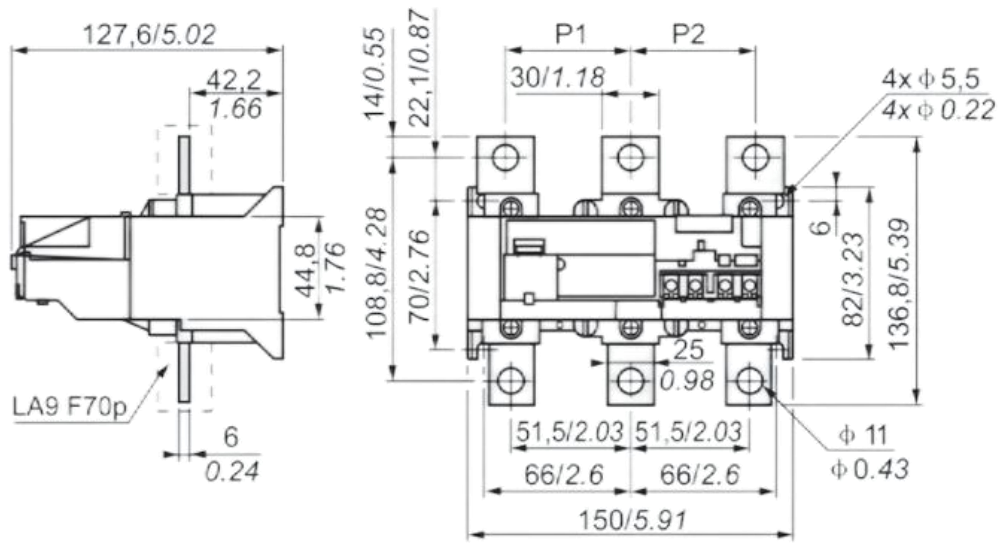
BASE NUMBER	Type	Current Range
THR	LR9	200A-330A
EXAMPLE	THR-LR9-200A-330A(OVERLOAD THERMAL 220A-330A FOR 225-500)	

MAIN TECHNICAL DATA

Model	The code on product	Current range(A)	Matching contactors
LR9-F53	F5357	30-50	CJX2-115~185
	F5363	48-80	CJX2-115~185
	F5367	60-100	CJX2-115~185
	F5369	90-150	CJX2-115~185
	F5371	132-220	CJX2-225~265
LR9-F73	F7375	200-330	CJX2-225~500
	F7379	300-500	CJX2-225~500
	F7381	380-630	CJX2-400~630

DIMENSIONS AND MOUNTING





LR9 F73