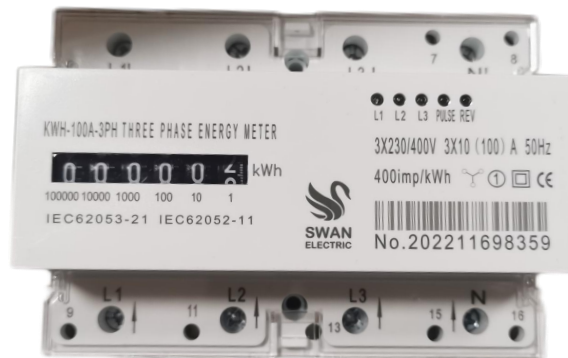


KWH METER 100A 3P MECHANICAL FACE



DESCRIPTION / APPLICATION

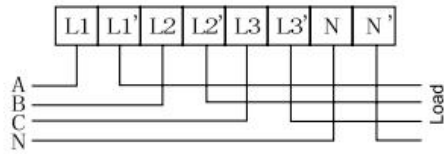
The meter is used in three phase four wire/three phase three wire /two phase three wire power grid. The meter is designed to measure AC active energy. It is a long life meter with the advantage of high stability, high over load capability, low power loss and small volume.

TECHNICAL DATA

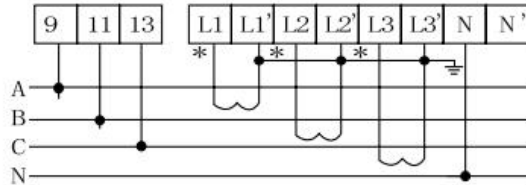
Rate voltage AC	three phase four wire 3x120/208V, 3x220/380V, 3x230/400V, 3x240/415V three phase three wire(two phase three wire) 2x120/208V, 2x127/220, 3x220V, 3x380V, 3x400V
Working voltage range	0.8~1.2Un
Rate Current	5A/CT, 1.5(6)A, 5(60)A, 10(100)A, or other as required
Frequency	50Hz or 60Hz
Connection mode	CT type or Direct type
Display	mechanical step register or LCD
Accuracy class	1.0
Power consumption	<0.5W/5VA/each phase
Start current	0.004Ib
AC voltage withstand	4000V/25mA for 60 sec
Impulse Voltage	6kV 1.2μs waveform
IP grade	IP20
Constant	400~6400 imp/kWh
Pulse output	Passive pulse, pulse width is 80±5 ms
Work temperature	-30°C ~ 70°C

WIRE CONNECTION

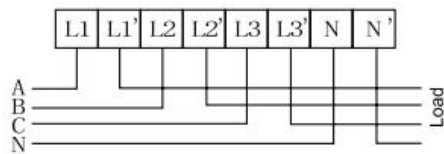
(1) three phase four wire direct connection



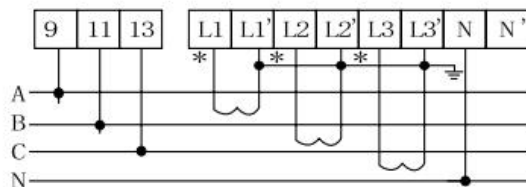
(2) three phase four wire through current transformer connection



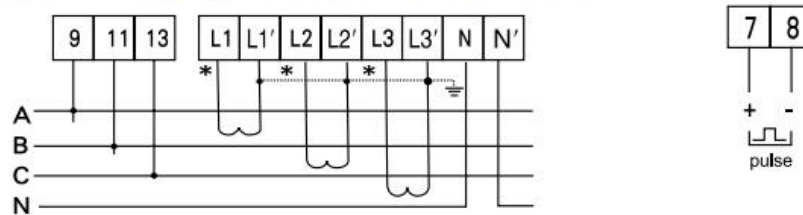
(3) three phase three wire direct connection



(4) two phase three wire direct connection



(5) three phase three wire through current transformer connection



OUTLINE DIMENSIONS

