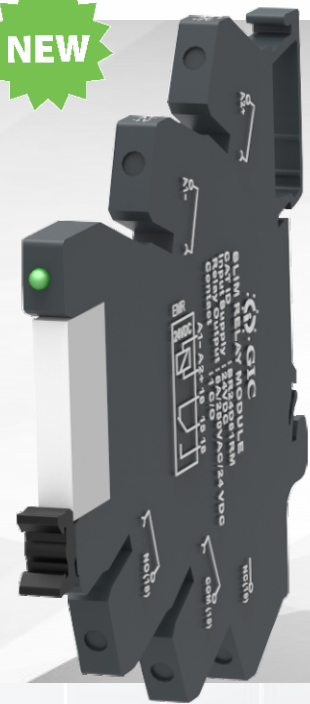
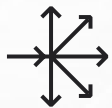


**NEW**


# Introducing Slim Relay Series

GIC Slim relay's combines the flexibility of a modular system and the ability of switching high currents on a very small footprint thus are a perfect fit for wide variety of applications where space saving is an absolute must!



Circuit  
Multiplication



Space saving with  
6.2mm width



Wider voltage range  
both AC & DC



LED Indication for  
relay status



Galvanic  
isolation



Voltage  
conversion



Compliant



1 C/O relay

## Applications



Transportation  
Systems



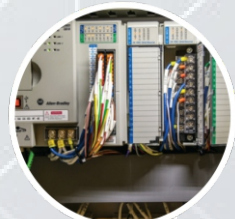
Automations  
Systems





DCS  
System



Machine  
Manufacturers



PLC  
Protection

Cat.No.	SR24D61RM	SR24U61RM	SR120U61RM	SR230A61RM	SR230U61RM
<b>Relay Input/Coil Specifications</b>					
Nominal Operating Voltage	24 VDC	24 VAC/DC	120 VAC/DC	230 VAC	230 VAC/DC
Nominal Input Current	7 mA	14.1 mA	7.4 mA	3.9 mA	9.45 mA
Max. Operating Voltage	28.8 VDC	28.8 VAC/DC	132 VAC/DC	242 VAC	242 VAC/DC
Min. Operate Voltage	19 VDC	19 VAC/DC	90 VAC/DC	170 VAC	82 VAC/DC
Min. Release Voltage	5.5 VDC	4.5 VAC/DC	21 VAC/DC	36 VAC	18 VAC/DC
<b>Relay Output/Contact Specifications</b>					
Contact Type	1 C/O				
Contact Material	AgNi				
Contact Resistance	100 m ohms at 1A 6 VDC				
Rated contact Current	6A				
Load Voltage Range	400 VAC, 125 VDC at reduced load				
Maximum Switching Power	1500 VA, 180W				
<b>Connection Specifications</b>					
Type of Connection	Screw connection				
Min. wire size	0.2 mm <sup>2</sup>				
Max. wire size	2.5 mm <sup>2</sup>				
Dimension (WxHxD) in mm	6.2 x 94.5 x 96				
Weight (Packed) Approx.	90 g				
<b>Technical Data</b>					
Supply Voltage Indication	3 mm green LED				
Ambient Operating Temp.	-40 to +55°C				
Mounting Possibility	Din-Rail (35 mm Symmetrical)				
Housing Material	UL 94 V0				
Input Polarity Protection	Rectifier		Bridge Rectifier		
Certification	 				

★ Specifications may subject to change during final product release

**General Industrial Controls Private Limited**

T-107 & T-114, M.I.D.C., Bhosari, Pune 411026, INDIA.

☎ +91(0)20 4623 2323    ✉ info@gicindia.com    🌐 www.gicindia.com