

IPS-CE – PANEL PLUG



DESCRIPTION / APPLICATION

Industrial plugs and sockets meet the international IEC 60309 Standard for the industrial sector and are available as mobile or for panel or wall mounting.

MAIN TECHNICAL DATA

Electrical Features	Standard		IEC60309-1, IEC60309-2
	Rated current	A	16, 32, 63, 125
	Poles		2P+E, 3P+E, 3P+N+E
	AC Volts	V	220-250V, 380-415V, 220-380V/240-415V
	Rated frequency	Hz	50/60
Mechanical Features	Degree of protection		IP44 or IP67
Installation	Ambient temperature	°C	-25 °C / +40 °C
	Terminal connection type		Screw terminals
	Mounting		Panel mounting

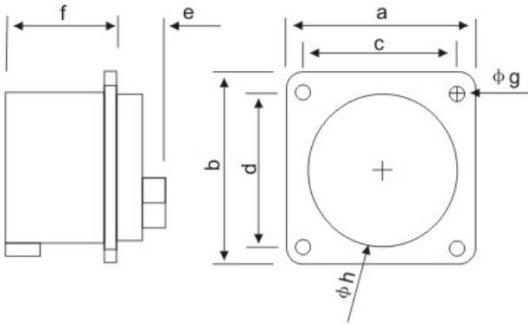
PART NUMBER EXAMPLE

BASE NUMBER	PRODUCT TYPE	CURRENT	POLES	PROTECTION
IPS-CE	6	1	3	2
EXAMPLE	IPS-CE-613			
	IPS-CE-6132			

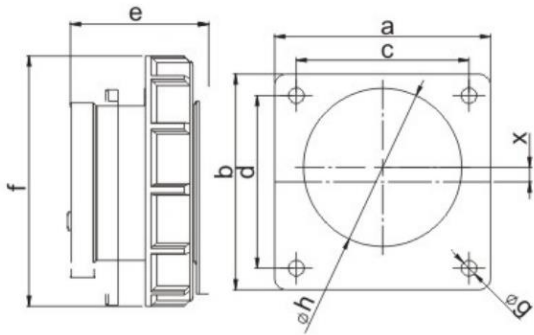
(Blank) = IP44

2 = IP67

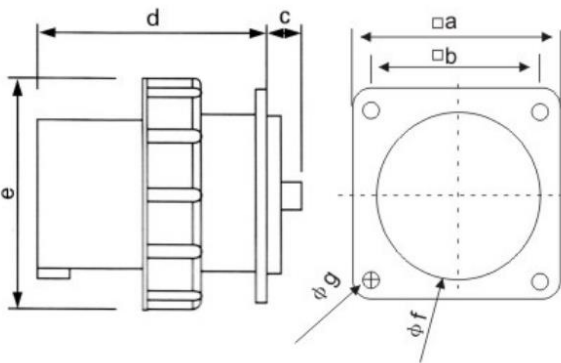
DIMENSIONS



Part Number	613	614	615	623	624	625
Ampere	16 A			32 A		
Poles	3	4	5	3	4	5
axb	70	70	70	70	70	70
cxd	56	56	56	56	56	56
e	25	25	26	30	30	30
f	41	41	42	50	50	50
g	5	5	5	5	5	5
h	43	43	55	55	55	55
Connection type	Screw terminal					
Wire flexible [mm ²]	1-2.5			2.5-6		



Part Number	6132	6142	6152	6232	6242	6252
Ampere	16 A			32 A		
Poles	3	4	5	3	4	5
axb	75	75	75	75	75	75
cxd	60	60	60	60	60	60
e	65	65	67	75	75	75
f	71	79	87	93	93	100
g	5.5	5.5	5.5	5.5	5.5	5.5
h	43	44	55	55	55	55
Connection type	Screw terminal					
Wire flexible [mm ²]	1-2.5			2.5-6		



Part Number	6332	6342	6352	6432	6442	6452
Ampere	63 A			125 A		
Poles	3	4	5	3	4	5
a	100	100	100	120	120	120
b	80	80	80	100	100	100
c	8	8	8	13	13	13
d	109	109	109	118	118	118
e	115	115	115	128	128	128
f	77	77	77	95	95	95
g	7	7	7	77	7	7
Connection type	Frame contact					
Wire flexible [mm ²]	6-16			16-50		